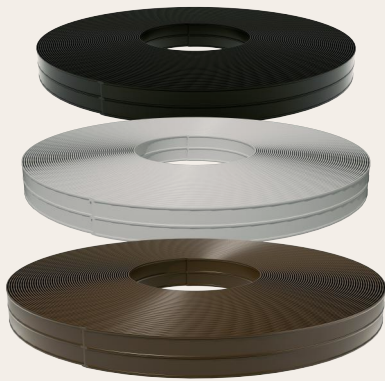


Product Data Sheet



FLEX RAIL NON-ELECTRIC

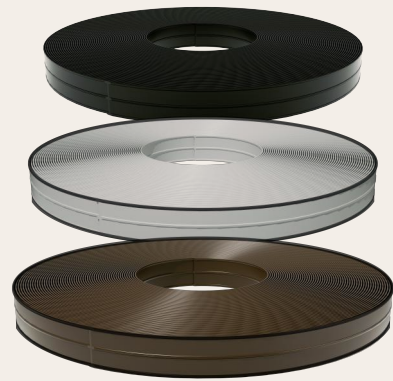
LF-MWLD-01

Colors



High quality UV-stabilised PE and high-strength hot-dip galvanized steel wire.

Wire size	2.5mm
Rail Width	108mm
Lenath	100m/200m
Rail	4.25" - 3 Wire
Steel Wire	12.5-Gauge
Min. Break Strength	1600KG



FLEX RAIL ELECTRIC

LF-MWLD-02

Colors



High quality UV-stabilised PE and high-strength hot-dip galvanized steel wire.

Wire size	2.5mm
Rail Width	108mm
Lenath	100m/200m
Rail	4.25" - 3 Wire
Steel Wire	12.5-Gauge
Min. Break Strength	1600KG

- Contains graphene
-